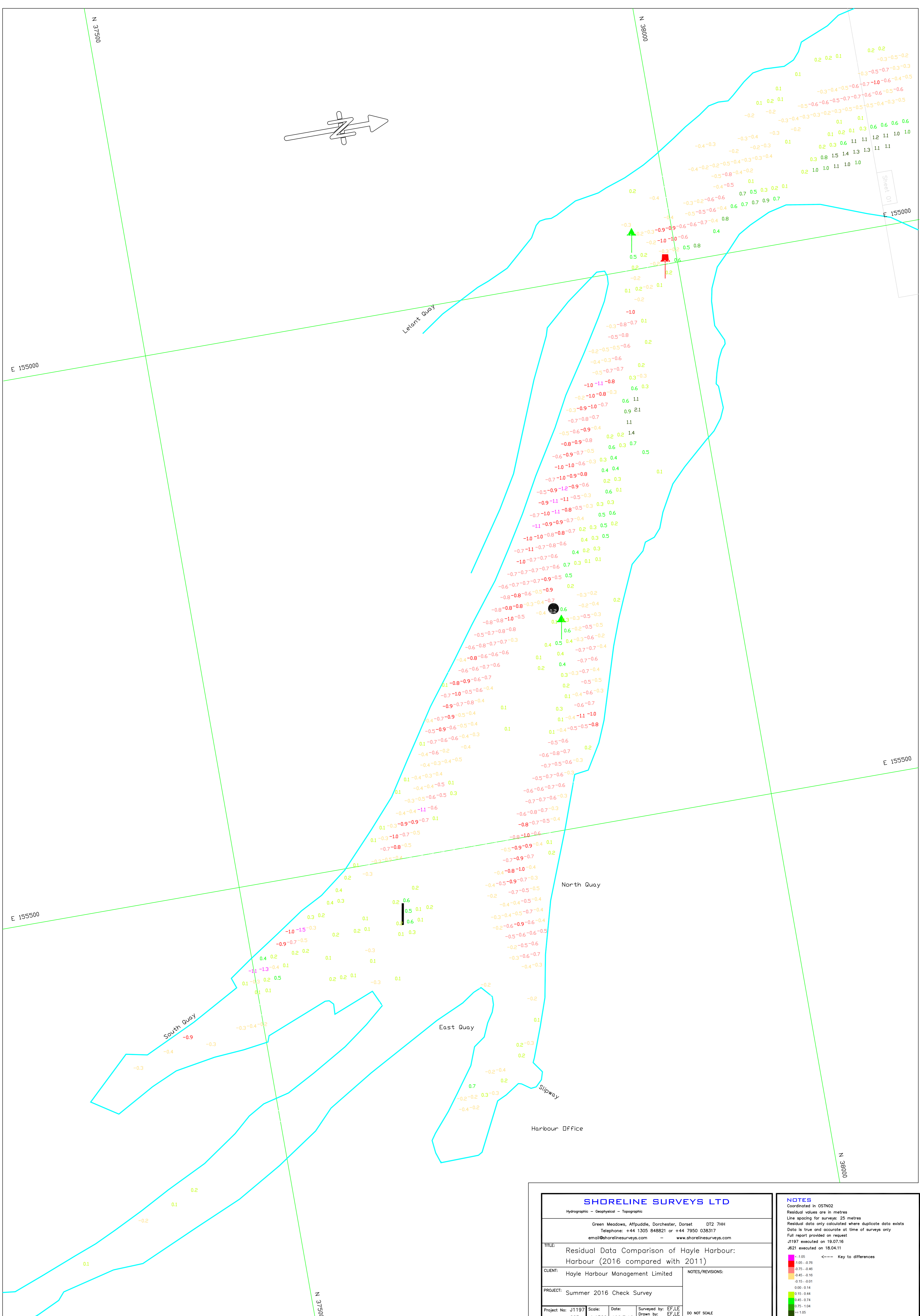


SHORELINE SURVEYS LTD <small>Hydrographic - Geophysical - Topographic</small>			
Green Meadows, Affpuddie, Dorchester, Dorset DT2 7HH Telephone: +44 1305 848821 or +44 7950 038317 email@shorelinesurveys.com - www.shorelinesurveys.com			
TITLE: Bathymetric Survey of Hayle Harbour: Harbour Approaches			
CLIENT: Hayle Harbour Management Limited		NOTES/REVISIONS: Contours are only indicative of seabed topography and should be treated as such Coastline is approximate	
PROJECT: Summer 2016 Check Survey			
Project No: J1197	Scale: 1:1500	Date: 19.07.16	Surveyed by: EF,LE Drawn by: EF Checked by: EF,LE
DO NOT SCALE			

NOTES
 Coordinated in OSTN02
 Depths below Chart Datum (CD)
 Tidal data recorded by RTK DGPS
 Line spacing: 20 metres
 Contours at 1.0 metre intervals
 Positioning system: RTK DGPS
 RTK Reference: Trimble VRS NOW
 CD/ ODN value adopted: -3.40 metres

Chapel Anjou Point

Sheet 02



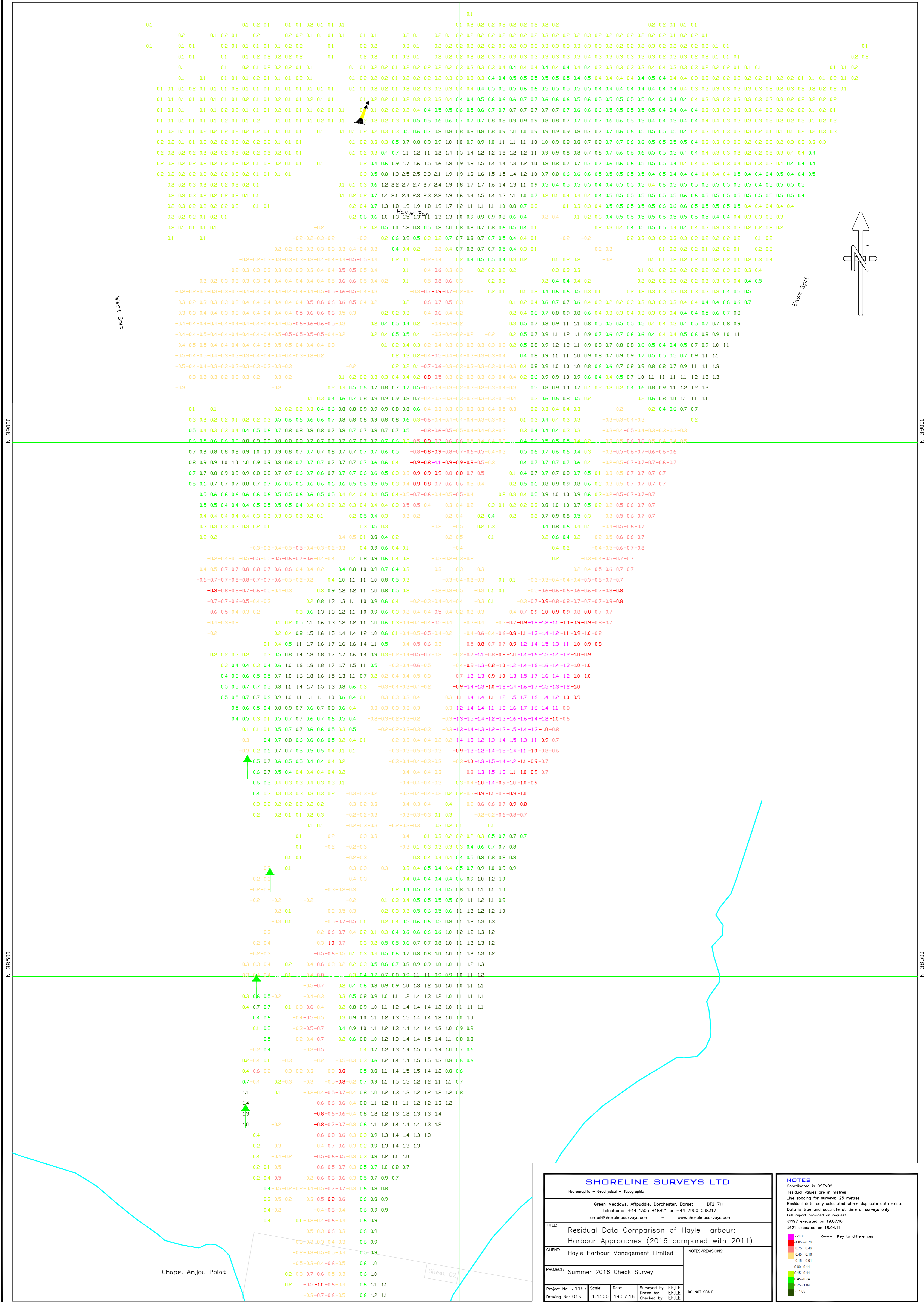
Sheet 01

SHORELINE SURVEYS LTD			
Hydrographic - Geophysical - Topographic			
Green Meadows, Affpuddle, Dorchester, Dorset DT2 7HH Telephone: +44 1305 848821 or +44 7950 038317 email@shoresurveys.com - www.shoresurveys.com			
TITLE: Residual Data Comparison of Hayle Harbour: Harbour (2016 compared with 2011)		NOTES/REVISIONS:	
CLIENT: Hayle Harbour Management Limited		DO NOT SCALE	
PROJECT: Summer 2016 Check Survey			
Project No: J1197	Scale: 1:1500	Date: 19.07.16	Surveyed by: EFLE Drawn by: EFLE Checked by: EFLE

NOTES
Coordinated in OSTN02
Residual values are in metres
Line spacing for surveys: 25 metres
Residual data only calculated where duplicate data exists
Data is true and accurate at time of surveys only
Full report provided on request
J1197 executed on 19.07.16
J621 executed on 18.04.11

Key to differences

Red	< -1.05
Orange	-1.05 - 0.75
Yellow	-0.75 - 0.45
Light Green	-0.45 - 0.15
Green	-0.15 - 0.01
Dark Green	0.00 - 0.14
Light Blue	0.15 - 0.44
Medium Blue	0.45 - 0.74
Dark Blue	0.75 - 1.04
Black	> 1.05



SHORELINE SURVEYS LTD			
Hydrographic - Geophysical - Topographic			
Green Meadows, Affpuddle, Dorchester, Dorset DT2 7HH Telephone: +44 1305 848821 or +44 7950 038317 email@shorelinesurveys.com www.shorelinesurveys.com			
TITLE: Residual Data Comparison of Hayle Harbour: Harbour Approaches (2016 compared with 2011)		NOTES/REVISIONS:	
CLIENT: Hayle Harbour Management Limited		PROJECT: Summer 2016 Check Survey	
Project No: J1197	Scale: 1:1500	Date: 19.07.16	Surveyed by: EF,LE Drawn by: EF,LE Checked by: EF,LE
DO NOT SCALE			<p>NOTES Coordinated in OSN02 Residual values are in metres Line spacing for surveys: 25 metres Line values are calculated where duplicate data exists Data is true and accurate at time of surveys only Full report provided on request J197 executed on 19.07.16 J621 executed on 18.04.11</p> <p>←←← Key to differences</p> <p> █ -1.05 █ -0.75 -0.46 █ -0.45 -0.16 █ -0.15 -0.01 █ 0.00 -0.14 █ 0.15 -0.44 █ 0.45 -0.74 █ 0.75 -1.04 █ >1.05 </p>

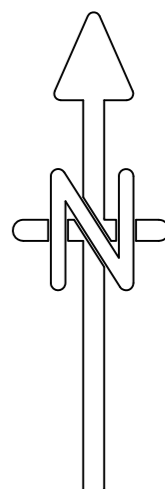
Sheet 02

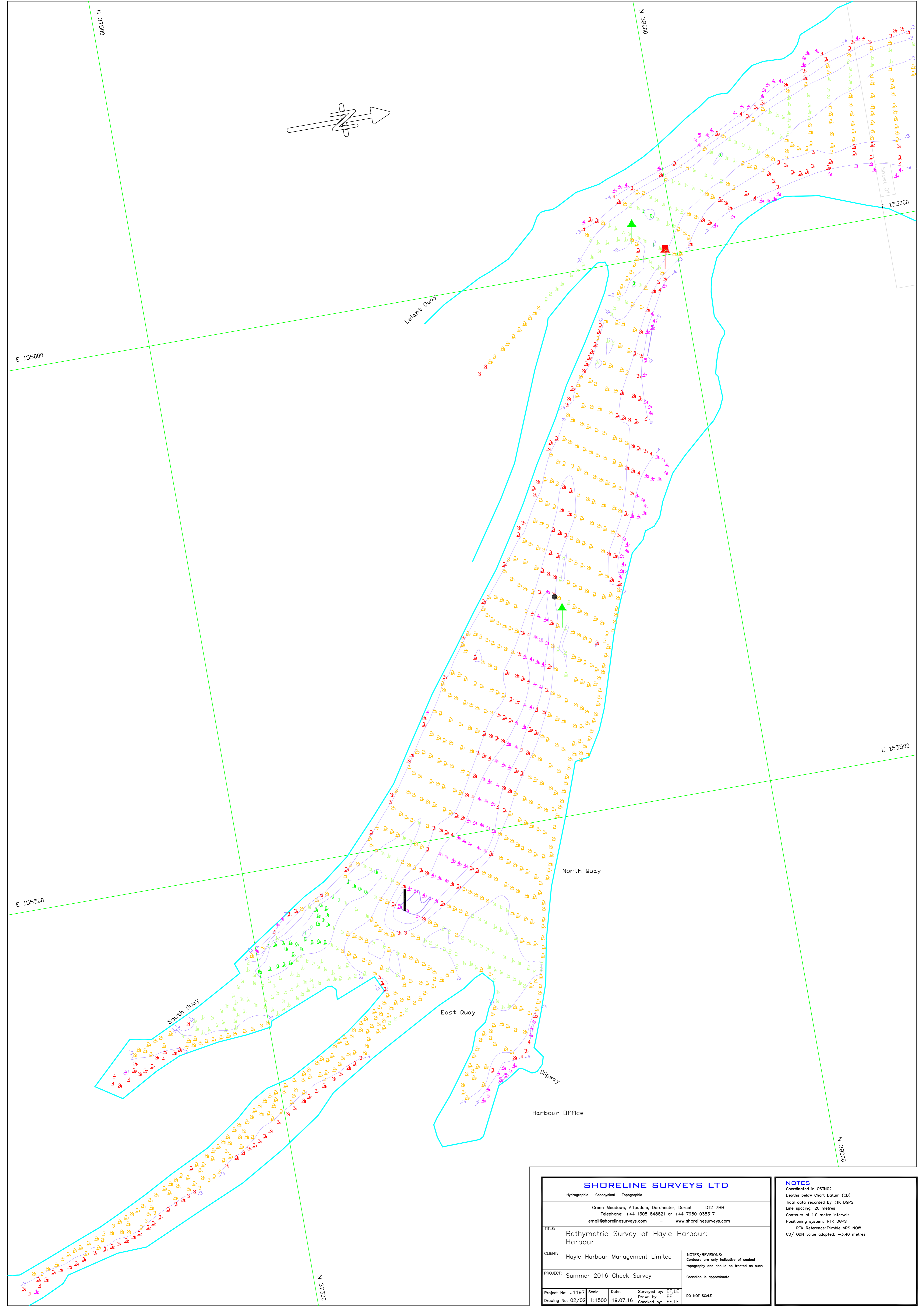
Chapel Anjou Point

Hayle Bay

West Spit

East Spit





SHORELINE SURVEYS LTD			
<small>Hydrographic - Geophysical - Topographic</small>			
Green Meadows, Affpuddle, Dorchester, Dorset DT2 7HH Telephone: +44 1305 848821 or +44 7950 038317 email@shorelinesurveys.com - www.shorelinesurveys.com			
TITLE: Bathymetric Survey of Hayle Harbour: Harbour			
CLIENT: Hayle Harbour Management Limited		NOTES/REVISIONS: Contours are only indicative of seabed topography and should be treated as such	
PROJECT: Summer 2016 Check Survey		Coastline is approximate	
Project No: J1197	Scale: 1:1500	Date: 19.07.16	Surveyed by: EF,LE Drawn by: EF Checked by: EF,LE
			DO NOT SCALE

NOTES
 Coordinated in OSTN02
 Depths below Chart Datum (CD)
 Tidal data recorded by RTK DGPS
 Line spacing: 20 metres
 Contours at 1.0 metre intervals
 Positioning system: RTK DGPS
 RTK Reference: Trimble VRS NOW
 CD/ ODN value adopted: -3.40 metres